

FILE DESCRIPTION: E-TRAC.CLIENT.TAPE

7/6/2001

DESCRIPTION:

The E-TRAC.CLIENT.TAPE is a format used by e-Trac clients to submit data on a periodic basis to the e-Trac Insurance Tracking System.

FORMAT:

- 1) Data will be in ASCII format.
- 2) Alpha and Alpha/Numeric fields will be left justified with trailing spaces.
- 3) Numeric fields will be right justified. Field types 'I' or 'V' have leading spaces. Field type 'L' has leading zeroes.
- 4) 'Over punch' characters are not allowed on numeric fields. Negative numbers must have a leading '-' minus character.
- 5) Dates will be formatted CCYYMMDD.
- 6) Identify physical media with the proper return address and creation date.

NARRATIVE:

This format consists of at a minimum, a single record per loan, with optionally an additional 8 records per loan for multiple collateral.

FIELD TYPES:

L = Integer field - zero filled

I = Integer field

V = Numeric field - implied decimal point

C = Alpha-numeric field

SUBMISSION:

The preferred method of data submission is via email attachment or FTP. We can act either as the client or host of a FTP session. Please see the instructions for both email and FTP submission methods at the end of this document. Alternate methods include diskette or reel tape. Data submitted on reel tape must conform to the following specifications: coding: EBCDIC, density: 800, 1600 or 6250, labeled or unlabeled (please specify), maximum block size: 10K bytes. Data may be optionally submitted on data cartridge.

File Definition

DATAFILE NAME: E-TRAC.CLIENT.TAPE

7/ 6/2001

COL	ITEM NAME	WDTH	OPUT	TYP	N.DEC	ALTERNATE NAME
33	ITEMS: STARTING IN POSITION		1			
1	CLIENT	4	4	L	0	
5	LOAN-NUMBER	11	11	L	0	
16	COLLATERAL-NO	1	1	I	-	
17	SORT-NAME	30	30	C	-	
47	NAME	30	30	C	-	
77	ADR-1	30	30	C	-	
107	ADR-2	30	30	C	-	
137	CITY	21	21	C	-	
158	FILL-1	1	1	C	-	
159	STATE	2	2	C	-	
161	FILL-2	1	1	C	-	
162	ZIP	5	5	I	-	
167	BRANCH	3	3	L	0	
170	RECORD-TYPE	1	1	I	-	
171	PROP-TYPE	4	4	C	-	
175	LOAN-TYPE	4	4	C	-	
179	CURRENT-BALANCE	8	8	I	-	
187	LOAN-DATE	8	8	I	-	
195	MATURE-DATE	8	8	I	-	
203	OFFICER	4	4	C	-	
207	PADR-1	30	30	C	-	
237	PCITY	21	21	C	-	
258	FILL-3	1	1	C	-	
259	PSTATE	2	2	C	-	
261	FILL-4	1	1	C	-	
262	PZIP	5	5	I	-	
267	COLL-YEAR	4	4	I	-	
271	COLL-SERIAL	6	6	C	-	
277	COLL-DESC	30	30	C	-	
307	REPO/FORCL-FLAG	1	1	C	-	
308	PAYOFF-DATE	8	8	I	-	
316	USER-DATA	4	4	C	-	
320	FILL-5	31	31	C	-	

Field Description: STATE **File Position: 159** **Length: 2**

Narrative: Insert the two character state abbreviation.

Field Description: FILL-2 **File Position: 161** **Length: 1**

Narrative: Blank fill.

Field Description: ZIP **File Position: 162** **Length: 5**

Narrative: Insert the five-digit zip code

Alternate mailing address submission

If it is not possible to provide the mailing city, state and zip in separate fields, they may be provided as a single combined 30-character field by using positions 137 through 166 (CITY, FILL-1, STATE, FILL-2 & ZIP).

Field Description: BRANCH **File Position: 167** **Length: 3**

Narrative: Insert your branch code and provide a list of names and addresses.

Field Description: RECORD-TYPE **File Position: 170** **Length: 1**

Narrative: This field indicates which type of record is present as follows:

0 = N/A	2 = Mobile Home	4 = Second Mortgage	6-9 = N/A
1 = Consumer Loan	3 = Mortgage	5 = Lease	

Field Description: PROP-TYPE **File Position: 171** **Length: 4**

Narrative: Insert your property-type code and provide a list of codes and definitions.

Field Description: LOAN-TYPE **File Position: 175** **Length: 4**

Narrative: Insert your loan-type code and provide a list of codes and definitions.

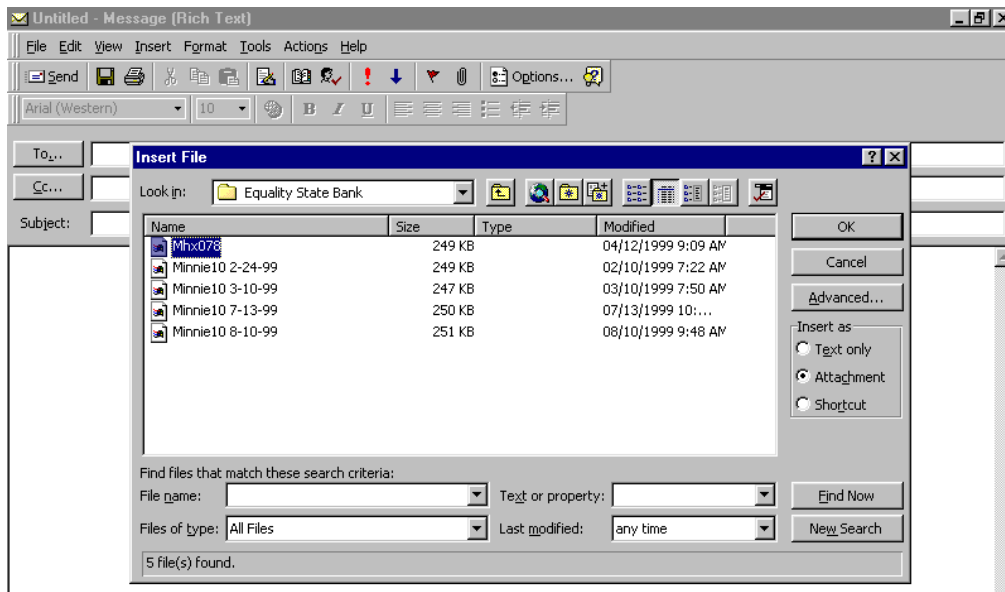
Field Description: CURRENT-BALANCE **File Position: 179** **Length: 8**

Narrative: Insert the current outstanding balance in whole dollars.

e-Trac Data Submission via email

These instructions assume you are using Microsoft Windows 95 or 98 and Outlook to send and receive email. They also assume that the file to be transmitted is on the sending system, and that an Internet connection has already been established.

1. Create a new email message directed to custdata@seattlespecialty.com
 - Click [File], [New], [Mail Message]
 - The blank message will appear. Type the address above in the first line, 'To...'
 - Include your financial institution name in the 'Subject' such as 'Equality State Bank data'
 - Insert any descriptive information in the body of the message as desired.
2. Attach the data file to the message.
 - Click [Insert], [File] or click on the paperclip icon and a dialog box will open.



- Move to the drive and directory containing the file to be sent. Double click on the file name, or single click and click on [OK].
- Make sure that 'Attachment' is selected under 'Insert as'. (Attachment is the default)
- The file will appear as an icon as the bottom of your message.
- Repeat these three steps if additional files are to be included in this message.
- Click [Send] to send the message.

e-Trac Data Submission via FTP

Seattle Specialty provides a secure FTP site for the submission of client via Internet FTP (file transfer protocol). The site does not allow for anonymous usage, so you will be provided with a user name and password to use the site.

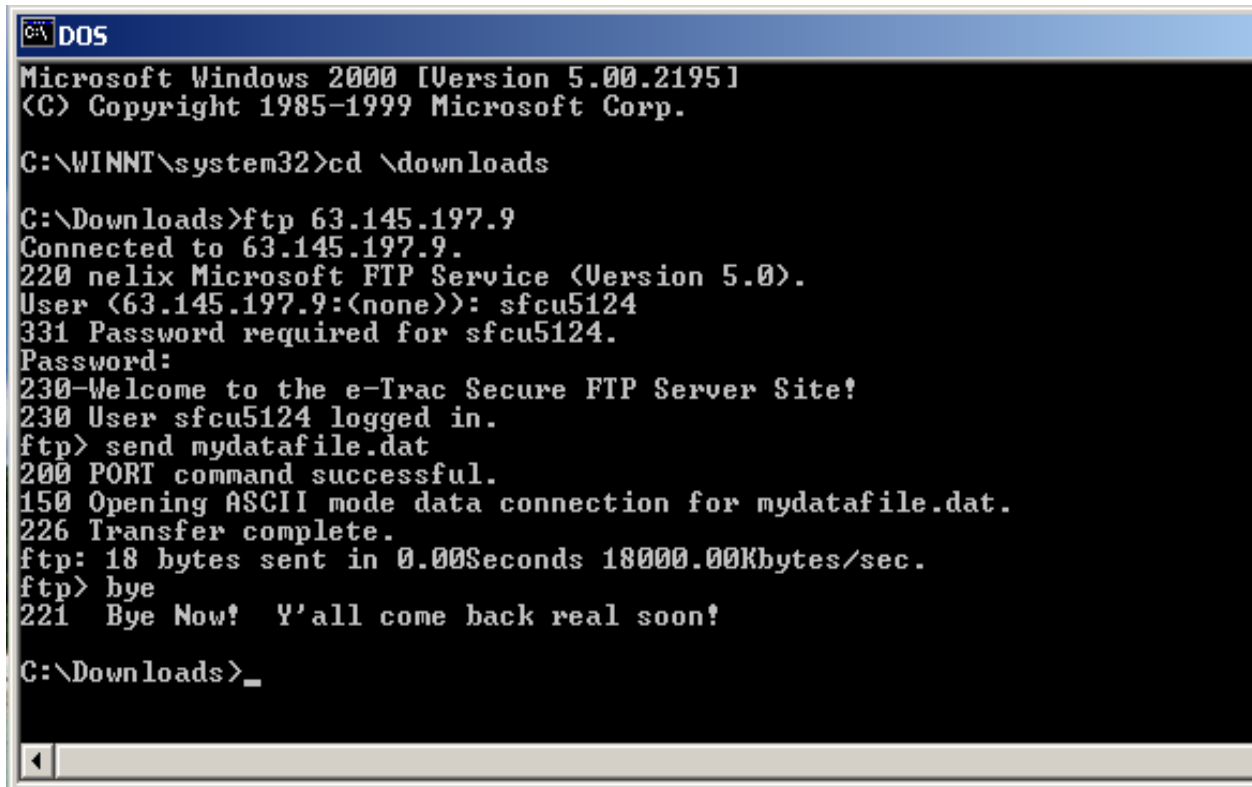
Your user name is: _____

Your password is: _____

A sample session follows. This was originated by a Windows 2000 Professional version based system, but the dialog is the same for Windows 85/98 based systems. You can also use graphical FTP programs, such as CuteFTP (<http://www.globalscape.com/>), Bulletproof FTP (<http://www.bpftp.com/>) or others.

The address for the FTP server is 63.145.197.9. You will have read/write authority. You will not be able to delete files on the server.

Please send an email message to custdata@seattlespecialty.com indicating the transfer has been completed. Contact the Information Systems department at Seattle Specialty if you have any questions at (800) 597-1866.

A screenshot of a DOS command prompt window titled "DOS". The window shows a sequence of commands and responses for an FTP session. The user navigates to the "downloads" directory and connects to the FTP server at 63.145.197.9. The user logs in with the username "sfcu5124" and a password. The user then sends a file named "mydatafile.dat" to the server. The transfer is successful, and the user says "bye". The server responds with a farewell message.

```
C:\DOS
Microsoft Windows 2000 [Version 5.00.2195]
(C) Copyright 1985-1999 Microsoft Corp.

C:\WINNT\system32>cd \downloads

C:\Downloads>ftp 63.145.197.9
Connected to 63.145.197.9.
220 nelix Microsoft FTP Service (Version 5.0).
User (63.145.197.9:(none)): sfcu5124
331 Password required for sfcu5124.
Password:
230>Welcome to the e-Trac Secure FTP Server Site!
230 User sfcu5124 logged in.
ftp> send mydatafile.dat
200 PORT command successful.
150 Opening ASCII mode data connection for mydatafile.dat.
226 Transfer complete.
ftp: 18 bytes sent in 0.00Seconds 18000.00Kbytes/sec.
ftp> bye
221 Bye Now! Y'all come back real soon!

C:\Downloads>_
```